



# DOORCONTROLSDIRECT

EXPERT KNOWLEDGE, QUALITY PRODUCTS, EXCEPTIONAL VALUE



[www.doorcontrolsdirect.co.uk](http://www.doorcontrolsdirect.co.uk)



[sales@doorcontrolsdirect.co.uk](mailto:sales@doorcontrolsdirect.co.uk)



01305 257996



DOOR CLOSERS



ACCESS CONTROL



ELECTRIC LOCKING



DIGITAL LOCKS



FIRE EXIT HARDWARE



DOOR HARDWARE



# PRODUCT BROCHURE

# 2019

issue 1

Please visit our website for the full product range  
[www.doorcontrolsdirect.co.uk](http://www.doorcontrolsdirect.co.uk)

# Often imitated, never bettered.

## Briton 2003V

Power adjustable  
door closer EN 1-4



- ✓ Tried & Trusted
- ✓ Certified & Approved
- ✓ Quick & Easy to install



CE



**Briton**

ALLEGION 



# OPEN Your Trade Account Today

**30**  
days

Apply for a  
30 day Trade  
Account

**0%**

30 days Interest  
Free Credit  
Available



Fast  
Application  
Process



Competitive  
Trade Prices



Monthly  
Statements

## HOW TO ORDER

 [www.doorcontrolsdirect.co.uk](http://www.doorcontrolsdirect.co.uk)

 [sales@doorcontrolsdirect.co.uk](mailto:sales@doorcontrolsdirect.co.uk)

 01305 257996

## HOW TO PAY



Prices exclude VAT. Full terms and conditions are available at:  
[www.doorcontrolsdirect.co.uk](http://www.doorcontrolsdirect.co.uk)  
Prices correct at time of print, please see website for latest prices and offers.

## WHY CHOOSE DOOR CONTROLS DIRECT?

-  Best UK Stock of Electromagnetic Door Closers
-  Top Brands
-  Competitive Prices
-  Quality Products
-  Expert Technical Advice
-  Friendly, Efficient Service

## DOOR CLOSERS

Pages 5-14



## ACCESS CONTROL

Pages 15-24



## DOOR HARDWARE

Pages 25-33



 Free Shipping  
ON ORDERS OVER £150 ex. VAT

 Delivered Next Day\*  
\*WORKING DAY - IF ORDERED BY 2:30PM

 Trade Accounts  
APPLY FOR A 30 DAY ACCOUNT

# WELCOME

*Welcome to our 2019 Product Brochure!*

Door Controls Direct are the UK's largest supplier of electromagnetic door closers and retainers.

We offer everything you need for your door; from hinge to handle, intumescent to intercom system and digital lock to proximity keypad.

We stock only **trusted brands** within the ironmongery industry and have an **experienced sales team** available to provide **technical support**; so our customers know that they can **rely on us** to guide them from selection of the right product to continually available **after sales support**.

With firmly established relationships with an extensive range of **leading manufacturers**, we have access to **thousands of products** and are always looking for new and **innovative solutions** to support our customers' requirements.

For our full product range, visit our website:

[www.doorcontrolsdirect.co.uk](http://www.doorcontrolsdirect.co.uk)



Sophie Walker

Business Development

EXPERT KNOWLEDGE, QUALITY PRODUCTS, EXCEPTIONAL VALUE

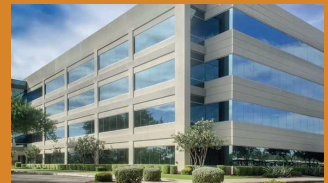


care homes



education

health  
care



commercial

hospitality



electrical







# DOOR CLOSERS

## MANUFACTURER BRANDS



## SYMBOLS GUIDE



BS8300 & ADM is the design of buildings & the approach to accessibility



Suitable for use on a fire door:  
30 mins.  
60 mins  
up to 120 mins  
rating



Complies with European health, safety and environmental legislation



International certification mark for fire safety



Made in Britain

## APPLICATION DIAGRAMS



Fig 1  
Standard application (door leaf installation) Closer is fixed to the pull side of the door.



Fig 61  
Transom application (frame installation) Closer is fixed to the frame on the push side of the door.



Fig 66  
Parallel arm application: Closer is fixed to the push side of the door using parallel arm bracket.

Please visit our website for the full product range  
[www.doorcontrolsdirect.co.uk](http://www.doorcontrolsdirect.co.uk)

## BEST SELLERS

## Arrow 624EM



- Universal Fixing (Fig. 1, Fig. 61 & Fig. 66)
- Suitable for Doors up to 80kg/1100mm wide
- Hold Open and Swing Free Functionality
- 24V DC 85mA Nominal Operating Voltage
- Fixed Power Size EN 4
- Adjustable Closing Speed and Latching Action

Code	Description	Price ex. VAT
DCF97	Silver	£107.99
DCF97SS	Satin Stainless	£129.99
DCF97PS	Polished Stainless	£129.99

## GEZE TS4000E &amp; TS4000EFS



- Suitable for Fig. 1 (Pull Side) Application
- Fig. 61 (Transom Push Side) Model Available on Request
- Suitable for Doors up to 120kg/1400mm wide
- Hold Open & Swing Free Models Available
- Hold Open Angle of 80-175°
- 24V DC 45mA Nominal Operating Voltage
- Adjustable Power Size EN 1-6
- Adjustable Closing Speed and Latching Action

Code	Description	Price ex. VAT
TS4000E	Hold Open Unit - Silver	£109.99
TS4000EFS	Swing Free Unit - Silver	£114.99

# BEST UK STOCK OF ELECTROMAGNETIC DOOR CLOSERS

## Briton 996

Briton



• Fig.1 (Pull Side) and Fig.61 (Transom Push Side) or Fig.66 (Push Side) Mounting Models Available

- Adjustable Closing Speed and Latching Action
- Hold Open & Swing Free Functionality
- 24V DC 90mA Nominal Operating Voltage
- Fixed Power Sizes EN 3, EN 4 & EN 5
- Silver Finish (other finishes available)

EN 3 – Suitable for doors up to 60kg/950mm wide

EN 4 – Suitable for doors up to 80kg/1100mm wide

EN 5 – Suitable for doors up to 100kg/1250mm wide

Code	Description	Price ex. VAT
DCB9961	EN 3, Pull Side App.	£123.99
DCB9966	EN 3, Push Side App.	£134.99
DCB99641	EN 4, Pull Side App.	£199.50
DCB99646	EN 4, Push Side App.	£199.50
DCB99651	EN 5, Pull Side App.	£199.50
DCB99656	EN 5, Push Side App.	£199.50

## Dorma TS73EMF & TS73EMFS

dorma  
kaba



- Suitable for Fig. 1 (Pull Side) Application
- Fig. 61 (Transom Push Side) Model Available on Request
- Suitable for Doors up to 80kg/1100mm wide
- Hold Open and Swing Free Models Available
- 24V DC 90mA Nominal Operating Voltage
- Fixed Power Size EN 4
- Adjustable Closing Speed and Latching Action

Code	Description	Price ex. VAT
TS73EMF	Hold Open Unit - Silver	£139.99
TS73EMFS	Swing Free Unit - Silver	£139.99

## LIGHT DUTY CLOSERS

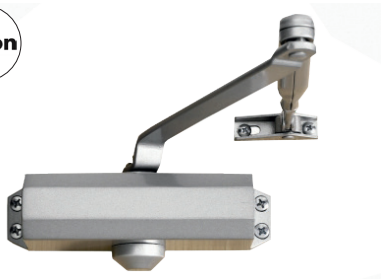
## Arrone AR450



- Universal Fixing (Fig. 1, Fig. 61 & Fig. 66)
- Suitable for Doors up to 60kg/950mm wide
- Suitable for Light Duty Internal Doors
- Fixed Power Size EN 3
- Adjustable Closing Speed and Latching Action

Code	Description	Price ex. VAT
DCF94	Silver	£10.50

## Briton 121



- Universal Fixing (Fig. 1, Fig. 61 & Fig. 66)
- Suitable for Doors up to 60kg/950mm wide
- Suitable for Light Duty Internal Doors
- Fixed Power Size EN 3
- Adjustable Closing Speed and Latching Action

Code	Description	Price ex. VAT
DCB1215CE	Silver	£15.55

## GEZE TS1500



- Universal Fixing (Fig. 1, Fig. 61 & Fig. 66)
- Suitable for Doors up to 80kg/1100mm wide
- Suitable for Light Duty Internal Doors
- Adjustable Power Size EN 3-4
- Adjustable Closing Speed and Latching Action

Code	Description	Price ex. VAT
DCG1500	Silver	£21.00



## MEDIUM DUTY CLOSERS

## Briton 2003V




- Universal Fixing (Fig. 1, Fig. 61 & Fig. 66)
- Suitable for Doors up to 80kg/1100mm wide
- Adjustable Power Size EN 1-4
- Adjustable Closing Speed and Latching Action
- Complete with Backcheck (Helps Prevent Damage to Door)

Code	Description	Price ex. VAT
DCB2003V	Silver	£49.80

## GEZE TS2000NVBC




- Universal Fixing (Fig. 1, Fig. 61 & Fig. 66)
- Suitable for Doors up to 80kg/1100mm wide
- Adjustable Power Size EN 2-4
- Adjustable Closing Speed and Latching Action
- Complete with Backcheck (Helps Prevent Damage to Door)

Code	Description	Price ex. VAT
DCG2000NVBC	Silver	£37.50

## Dorma TS73V BC




- Universal Fixing (Fig. 1, Fig. 61 & Fig. 66)
- Suitable for Doors up to 80kg/1100mm wide
- Adjustable Power Size EN 2-4
- Adjustable Closing Speed and Latching Action
- Complete with Backcheck (Helps Prevent Damage to Door)

Code	Description	Price ex. VAT
DCD73VBC	Silver	£67.20

## HEAVY DUTY CLOSERS

## GEZE TS4000S



- Universal Fixing (Fig. 1, Fig. 61 & Fig. 66)
- Suitable for Doors up to 120kg/1400mm wide
- Adjustable Power Size EN 1-6
- Adjustable Closing Speed and Latching Action
- Complete with Backcheck (Helps Prevent Damage to Door)
- Complete with Delayed Action (Door Holds Open Momentarily before Closing)

Code	Description	Price ex. VAT
DCG4000	Silver	£62.50

## Arrow 325VP



- Universal Fixing (Fig. 1, Fig. 61 & Fig. 66)
- Suitable for Doors up to 100kg/1250mm wide
- Adjustable Power Size EN 2-5
- Adjustable Closing Speed and Latching Action
- Complete with Backcheck (Helps Prevent Damage to Door)

Code	Description	Price ex. VAT
DCA325SE	Silver	£39.95
DCA325SS	Satin Stainless	£49.95
DCA325PS	Polished Stainless	£49.95

## Dorma TS83 BC DC



- Universal Fixing (Fig. 1, Fig. 61 & Fig. 66)
- Suitable for Doors up to 100kg/1250mm wide
- Adjustable Power Size EN 2-5
- Adjustable Closing Speed and Latching Action
- Complete with Backcheck (Helps Prevent Damage to Door)
- Complete with Delayed Action (Door Holds Open Momentarily before Closing)

Code	Description	Price ex. VAT
DCD83BCDC	Silver	£90.65

## SLIDE ARM CLOSERS

## GEZE TS3000V



- Universal Fixing (Fig. 1, Fig. 61 & Fig. 66)
- Suitable for Doors up to 80kg/1100mm wide
- Adjustable Power Size EN 1-4
- Adjustable Closing Speed and Latching Action

Code	Description	Price ex. VAT
TS3000V	Silver	£66.85

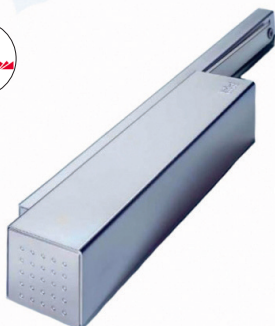
## Arrow 324VP



- Suitable for Fig. 1 (Pull Side) Application
- Suitable for Doors up to 80kg/1100mm wide
- Adjustable Power Size EN 2-4
- Adjustable Closing Speed and Latching Action

Code	Description	Price ex. VAT
DCA324SE	Silver	£89.50
DCA324SS	Satin Stainless	£89.50
DCA324PS	Polished Stainless	£89.50

## Dorma TS93 BC DC



- Suitable for Fig. 1 (Pull Side Application)
- Suitable for Doors up to 100kg/1250mm wide
- Adjustable Power Size EN 2-5
- Complete with Backcheck (Helps Prevent Damage to Door)
- Complete with Delayed Action (Door Holds Open Momentarily before Closing)
- Very Heavy Duty

Code	Description	Price ex. VAT
TS93B	Silver	£123.60

## CONCEALED CLOSERS

### GEZE Boxer



MORE OPTIONS AVAILABLE AT



EXPERT KNOWLEDGE. QUALITY PRODUCTS. EXCEPTIONAL VALUE.



- Available Single or Double Action
- Adjustable Power Size EN 2-4
- Complete with Backcheck (Helps Prevent Damage to Door)
- Suitable for Doors up to 130kg/1100mm wide
- Minimum Door Thickness Required: 40mm (Non Fire Doors) 44mm (Fire Doors)

Code	Description	Price ex. VAT
BX24SFR	Single Action - Silver	£128.00
BX24DFR	Double Action - Silver	£176.50

### GEZE Boxer EMF



MORE OPTIONS AVAILABLE AT



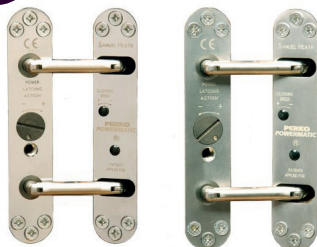
EXPERT KNOWLEDGE. QUALITY PRODUCTS. EXCEPTIONAL VALUE.



- Available Single or Double Action
- Hold Open Range of 80° - 120°
- Suitable for Doors up to 130kg/1100mm wide
- Adjustable Power Size EN 2-4
- 24V DC 100mA Nominal Operating Voltage
- Minimum Door Thickness Required: 40mm (Non Fire Doors) 44mm (Fire Doors)
- Complete with Backcheck (Helps Prevent Damage to Door)

Code	Description	Price ex. VAT
BX24ES	Electromag. Single Action	£232.50
BX24ED	Electromag. Double Action	£291.75

### Perko Powermatic



- Fixed Power Size EN 3
- Suitable for Doors up to 80kg/950mm wide
- Minimum Door Thickness Required: 44mm
- Fire Rated When Used With Intumescent
- Adjustable Closing Speed and Latching Action

Code	Description	Price ex. VAT
DCR100SC	Satin Chrome	£184.25
DCR100PC	Polished Chrome	£184.25
DCR100PB	Polished Brass	£175.65
DCR100SN	Satin Nickel	£184.25



## DOOR RETAINERS

## Geofire Electromagnetic Door Holder



ACCESSORIES AVAILABLE AT

DOORCONTROLSDIRECT  
EXPERT KNOWLEDGE. QUALITY PRODUCTS. EXCEPTIONAL VALUE

- 200N Holding Force
- Manual Override Release Switch
- Zero Residual Force
- 24V DC 48mA Nominal Operating Voltage - DHEM24

Code	Description	Price ex. VAT
DHEM24	24V DC White Unit	£16.90
DHEM240	230V AC White Unit	£18.50
DHEMFB	Floor Brackets	£8.50
DHEMKC	1m Chain Keeper Plate	£29.95

## Dorma EM500A



- 400N Holding Force
- Manual Override Release Switch
- 24V DC 63mA Nominal Operating Voltage
- Variations of Armature Plates Available

Code	Description	Price ex. VAT
DHEM500A	Without Armature Plate	£73.95
DHEM500A-MAG	With MAG Armature Plate	£90.50
DHEM500A-MAW	With MAW Armature Plate	£109.40

## Dorgard



- Wire-Free Solution for Legally Holding Fire Doors Open
- Door Can be Held Open at any Selected Angle
- Install in less than 5 minutes
- Supplied with 2x C size Batteries

Code	Description	Price ex. VAT
DORGARDB	Black Unit	£95.00
DORGARDW	White Unit	£95.00

## FLOOR SPRINGS

## Dorma BTS75V



ACCESSORY PACKS AVAILABLE AT

**DOORCONTROLSDIRECT**  
EXPERT KNOWLEDGE. QUALITY PRODUCTS. EXCEPTIONAL VALUE.


- Suitable for Single or Double Action Doors
  - Adjustable Power Size EN 1-4
  - Suitable for Doors up to 120kg/1100mm wide
  - Complete with Backcheck (Helps Prevent Damage to Door)
  - Universal Handing
- \*Accessory Packs Include all Straps, a Cover Plate and Spindle

Code	Description	Price ex. VAT
DCD75V	Non Hold Open (Mech Only)	£103.50
DCD75V90	90° Hold Open (Mech Only)	£103.50
DCD75V105	105° Hold Open (Mech Only)	£103.50

## Dorma BTS80EMB



ACCESSORY PACKS AVAILABLE AT

**DOORCONTROLSDIRECT**  
EXPERT KNOWLEDGE. QUALITY PRODUCTS. EXCEPTIONAL VALUE.


- Electromagnetic Hold Open Operation
  - Suitable for Doors up to 300kg/1100mm wide
  - 24V DC 95mA Nominal Operating Voltage
  - Fixed Power Size EN 4
  - DIN Handed
- \*Accessory Packs Include all Straps, a Cover Plate and Spindle

Code	Description	Price ex. VAT
DCD80EMB	Double Action (Mech Only)	£402.90
DCD80EMB-L	Single Action LH (Mech Only)	£402.90
DCD80EMB-R	Single Action RH (Mech Only)	£402.90

## Geze TS550E &amp; TS550ER



ACCESSORY PACKS AVAILABLE AT

**DOORCONTROLSDIRECT**  
EXPERT KNOWLEDGE. QUALITY PRODUCTS. EXCEPTIONAL VALUE.


- Electromagnetic Hold Open Operation
- Suitable for Doors up to 250kg/1400mm wide
- Suitable for Double Action Doors (Single Action Available- TS550E)
- 24V DC 120mA Nominal Operating Voltage
- Adjustable Power Size EN 3-6
- DIN Handed
- Cover Plate Sold Separately

Code	Description	Price ex. VAT
DCG550ER	Double Action (Mech Only)	£395.80
DCG550E-L	Single Action LH (Mech Only)	£398.50
DCG550E-R	Single Action RH (Mech Only)	£398.50

PLEASE REFER TO OUR WEBSITE FOR HANDING GUIDE AND THE FULL PRODUCT RANGE





# ACCESS CONTROL

MANUFACTURER BRANDS



Please visit our website for the full product range  
[www.doorcontrolsdirect.co.uk](http://www.doorcontrolsdirect.co.uk)

## KEYPADS

## ACT 5e Keypad



PROXIMITY FOBS  
SOLD SEPARATELY

- Suitable for Internal & External Installation (IP67 Rated)
- Up to 10 Four Digit User Codes - EXPACT5
- Up to 50 Codes and/or Cards - EXPACT5EP
- 12 or 24V AC/DC Operating Voltage
- 1 x 5amp Door Relay Output
- Backlit Keypad
- Keypad & Proximity Reader Option
- Dimensions: 94mm x 130mm x 25mm

Code	Description	Price ex. VAT
EKPACT5	Digital Keypad	£43.20
EKPACT5EP	Digital Proximity Keypad	£95.50
FOBACT5	Pack of 10 ACT Fobs	£25.50

## ACT 10 Digital Keypad



- Suitable for Internal & External Installation (IP54 Rated)
- Up to 10 User Codes
- Vandal Resistant
- 12 or 24V AC/DC Operating Voltage
- 2 x 5amp Relay Outputs
- Backlit Keypad
- Dimensions: 138mm x 87mm x 37mm

Code	Description	Price ex. VAT
EKPACT10	Digital Keypad	£86.90

## V42 Keypad



- Suitable for Internal & External Installation (IP54 Rated)
- Up to Four Digit User Codes
- 12V DC or 24V AC Operating Voltage
- Backlit Keypad
- 1 x Volt Free Relay
- Dimensions: 140mm x 80mm x 40mm

Code	Description	Price ex. VAT
EKPK42	V24 Keypad (Formerly K42)	£71.50



## KP25 Keypad



- Suitable for Internal Installation Only
- Backlit Keypad
- Stainless Steel Faceplate
- 120 Unique User Codes
- 12V DC Operating Voltage
- Dimensions: 117mm x 80mm x 40mm

Code	Description	Price ex. VAT
EKP25	Keypad	£32.50

## KPX75 Keypad



- Suitable for Internal & External Installation (IP65 Rated)
- Robust Heavy Duty Keypad
- Vandal Resistant
- 12V DC Operating Voltage
- Latch & Toggle Function
- Compatible with 125KHz EM Cards & Fobs
- Dimensions: 180mm x 46mm x 25mm

Code	Description	Price ex. VAT
EKPX75	Keypad	£70.50
FOB2000	1x Proximity Fob	£1.30



PROXIMITY FOBs  
SOLD SEPARATELY

## KP1000 & KPX1000 Keypads



- Suitable for Internal & External Installation (Rain-Shield) Sold Separately
- Vandal Resistant
- 12V DC Operating Voltage
- Up to 500 User Codes
- Backlit Buttons
- Dimensions: 120mm x 76mm x 25mm

Code	Description	Price ex. VAT
EKP1000	Keypad	£46.20
EKPX1000	Keypad & Prox. Reader	£54.50
FOB2000	1x Proximity Fob	£1.30
EKP1000RS	Rainshield	£9.35



PROXIMITY FOBs &  
RAINSHIELD SOLD SEPARATELY

## POWER SUPPLY UNITS

## 12V &amp; 24V Power Supply Units



- Available 12V DC or 24V DC, 1-5Amp
- Additional Battery Charging. Compatible Batteries: 12V 9Ah
- Deep Discharge Protection
- LED Indicators (Mains & Battery Output)
- Tamper & Electronic Protection
- Regulated Output
- Compliant to EMC EN61000-6-1 & 3
- 12V DC 1,2 & 3Amp Box Dimensions: 225mm x 196mm x 75mm
- 12V DC 5Amp Box Dimensions: 310mm x 340mm x 80mm
- 24VDC 1,2,3 & 5Amp Box Dimensions 310mm x 340mm x 80mm

Code	Description	Price ex. VAT
DCE11A	12V DC 1AMP	£18.50
DCE12A	12V DC 2AMP	£29.75
DCE13A	12V DC 3AMP	£35.35
DCE15A	12V DC 5AMP	£65.20
DCE241	24V DC 1AMP	£35.00
DCE242	24V DC 2AMP	£37.50
DCE243	24V DC 3AMP	£49.50
DCE245	24V DC 5AMP	£73.50

## Batteries



- Maintenance Free
- For Use With 12 VDC or 24 VDC Power Supplies:  
12V DC – 1 x Battery required  
24V DC – 2 x Batteries required
- Sealed Lead Acid Batteries
- Dimensions: 178mm x 65mm x 34mm

Code	Description	Price ex. VAT
DCEB2	2.1Ah Battery	£9.40
DCEB7	7Ah Battery	£11.90

## Transformer Rectifiers



- Ideal For Use With Electromagnetic Hold Open Devices
- 24V DC Regulated Output
- Mains Present & Fault Indicators
- Fused Output
- Short Circuit Protection
- Dimensions: 200mm x 200mm x 65mm

Code	Description	Price ex. VAT
DCE2A	24V DC 2Amp	£36.90
DCE4A	24V DC 4Amp	£42.10

## EXIT BUTTONS

## Green Momentary Press to Exit Button



- Green Domed Button on Stainless Steel Plate
- Suitable for Surface or Flush Fitting
- Suitable for Internal & External Installation (IP66 Rated)
- Output: 4amp Contact @ 30V AC/DC
- Dimensions: 85mm x 85mm x 28mm

Code	Description	Price ex. VAT
EBGBSS	Satin Stainless Steel	£12.10

## Dual Unit - Green Dome Press to Exit &amp; EDR



- Green Domed Button on Stainless Steel Plate
- Emergency Door Release (Resettable – Triple Pole)
- Suitable for Surface or Flush Fitting
- 12 or 24V DC Operation
- Designed for Greater Than 1 Million Operations
- Dimensions: 160mm x 90mm x 63mm

Code	Description	Price ex. VAT
EBDUGD	Dual Unit	£21.50

## Emergency Door Releases



- Resettable with Key Operation
- Single, Double Pole or Triple Pole Available
- 12/24V DC Operation
- Includes Audible/LED (Double or Triple Pole Only)
- Dimensions: 88mm x 88mm x 52mm

Code	Description	Price ex. VAT
EBGUS	Single Pole	£6.95
EBGUD	Double Pole	£9.85
EBGUT	Triple Pole	£14.10

## EXIT BUTTONS

## Relays



- A Range of Easy to Wire Relays
- 12/24V DC Operation
- Complete with NC/COM/NO Contacts

Code	Description	Price ex. VAT
RLFIRE	Fire Relay	£8.80
RLTIMER	Timer Relay	£18.60
RLMULTI	Multi-purpose Relay	£9.50

## Rocker Style Switch Press to Exit Button



- White Plastic Momentary Press To Exit Button
- Suitable for Surface or Flush Fitting
- Suitable for Internal Installation Only
- Output: 10Amp contact @ 240V AC/DC
- Wear Resistant Legend
- Dimensions (Standard): 85mm x 85mm x 28mm
- Dimensions (Narrow Style): 85mm x 39mm x 28mm

Code	Description	Price ex. VAT
EBWPTE	Standard	£6.50
EBWPTEN	Narrow Style	£6.50

## Large All Active Exit Button



- Suitable for Surface or Flush Fitting
- All Active 360° Push Plate
- Suitable for Internal Installation Only
- Designed for Greater than 1 Million Operations
- Output: 4Amp Contact @30V AC/DC
- Dimensions: 85mm x 85mm x 28mm

Code	Description	Price ex. VAT
EBEXIT	Stainless Steel	£15.50



## ELECTRIC LOCKING

## ML600 Internal Maglock



- 12/24V DC Operating Voltage - 480/240 mA Draw
- 300kg (600lb) Holding Force
- Fire Tested to BS EN1634-1 for FD30 & FD60 Doors (if used with armature housing)
- ML600/ML600M Dimensions: 250mm x 42mm x 25mm
- ML600D Dimensions: 500mm x 42mm x 25mm

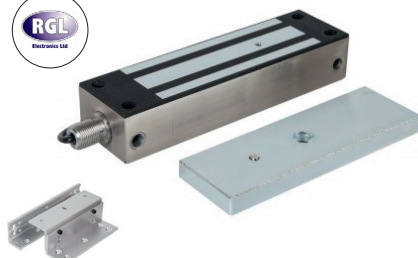
Code	Description	Price ex. VAT
ML600	Single Maglock (Unmonitored)	£23.50
ML600M	Single Maglock (Monitored)	£27.50
ML600D	Double Maglock	£46.20
ML600AS	Armature Housing	£9.90
ML600ZL	Z&L Brackets Inward Opening	£10.80

## ML1200 Internal Maglock



- 12/24V DC Operating Voltage - 600/300 mA Draw
- 545kg (1200lb) Holding Force
- Fire Tested to BS EN1634-1 for FD30 & FD60 Doors (if used with armature housing)
- ML1200 Dimensions: 267mm x 73mm x 40mm
- ML1200DM Dimensions: 530mm x 73mm x 40mm

Code	Description	Price ex. VAT
ML1200	Single Maglock	£42.90
ML1200DM	Double Maglock (Monitored)	£95.70
ML1200AS	Armature Housing	£16.80
ML1200ZL	Z&L Brackets	£18.95

ML600EX & ML1200EX  
External Maglocks

Z&amp;L Bracket

- 12/24V DC Operating Voltage - 500/250 mA Draw
- 300kg (600lb) Holding Force – ML600EX
- 545kg (1200lb) Holding Force – ML1200EX
- Fire tested to BS EN1634-1 for FD30 & FD60 Doors (if used with armature housing)
- ML600EX dimensions: 220mm x 45mm x 27mm
- ML1200EX dimensions: 220mm x 60mm x 40mm

Code	Description	Price ex. VAT
ML600EX	ML600EX External Maglock	£44.00
ML600EXZL	ML600EX Z&L Brackets	£12.00
ML1200EX	ML1200EX External Maglock	£48.70
ML1200EXZL	ML1200EX Z&L Brackets	£17.75

## ELECTRIC LOCKING

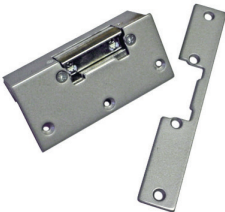
## Alpro EL900 ANSI Heavy Duty Mortice Electric Strike - 12V DC



- Suitable for Aluminium & Timber Doors
- Low Current Consumption
- Reversible Fail Secure & Fail Safe Operation
- Supplied with 25mm Extension Lip and Long & Short Faceplate's
- 12V DC (24V DC Option available upon request)
- Dimensions: 124mm x 42mm x 31mm

Code	Description	Price ex. VAT
ESEL900	Standard	£46.90
ESEL900M	Monitored	£58.10

## Diax Rim/Mortice Electric Strikes



- 12V DC & 24V DC Options Available
- Fail Secure or Fail Safe Operation
- 300kg Holding Force
- Dimensions: 90mm x 28mm x 20mm

Code	Description	Price ex. VAT
ES12FU	12V DC Fail Unlocked/Safe	£16.75
ES12FL	12V DC Fail Locked/Secure	£10.45
ES24FU	24V DC Fail Unlocked/Safe	£17.40

## Alpro AL110 ANSI High Security Mortice Electric Strike



- Suitable for Aluminium & Timber Doors
- Weather Resistant – IP65 Rated
- 1750kg Holding Force
- 12/24V DC Operating Voltage
- Reversible Fail Secure & Fail Safe Operation
- Low Current Consumption
- Long Faceplate Dimensions: 200mm x 35mm
- Short Faceplate Dimensions: 124mm x 31mm

Code	Description	Price ex. VAT
ESAL110S	Short Faceplate	£102.05
ESAL110L	Long Faceplate	£108.75

## Abloy EL560 & EL561 Solenoid Locks



- 12/24V DC High Security Electric Lock
- Reversible Fail Secure & Fail Safe Operation
- 65mm Backset
- EL560 – Outside Handle Electrically Controlled
- EL651 – Both Handles Electrically Controlled
- Dimensions: 235mm x 168.5mm x 98mm

Code	Description	Price ex. VAT
EL560	EL560 Lock	£424.20
EL561	EL561 Lock	£424.20

## Abloy EFF 351M80 Electric Lock



- 12-48V DC Operating Voltage
- Fail Safe Operation
- 5000N Holding Force
- Suitable for Single or Double Action Doors
- Suitable for Vertical or Horizontal Mounting
- Door & Locking Monitoring Functionality
- Dimensions: 200mm x 25mm x 42mm

Code	Description	Price ex. VAT
EL351M80	351M80 Lock	£522.00

## Adams Rite 1391 Mortise Solenoid Bolt



- 12/24V DC Operating Voltage
- Fail Safe Operation
- 1000kg Holding Force
- Suitable for Single and Double Action Doors (with Positive Centring Door Closers)
- Can be fitted into Head or into Vertical Locking Stile
- Dimensions: 38mm x 210mm x 43mm

Code	Description	Price ex. VAT
EL1391	12V DC Fail Safe	£137.90

## SHEAR LOCKS

## MSL2600 Shear Lock &amp; Surface Housing



- Suitable for Aluminium & Timber Doors
- 12/24V DC Operating Voltage (Automatic Adjusting)
- Automatic Repeated Locking
- 1200kg Shear Force
- Surface Housing – ideal for use on Fire Doors
- Dimensions: 182mm x 25mm x 30mm
- Dimensions of Surface Housing: 231mm x 43.5mm x 46mm

Code	Description	Price ex. VAT
EL2600	MSL2600 Shear Lock	£86.70
SH2600	MSL2600 Surface Housing	£42.00

## Alpro EMS1200 High Security Compact Shear Lock Magnet



- Suitable for Aluminium, Timber & Steel Doors
- 12/24V DC Operating Voltage
- Automatic Repeated Locking
- 1200kg Shear Force
- Dimensions of Magnet: 163mm x 30mm x 35mm

Code	Description	Price ex. VAT
EL1200M	EMS1200 Shear Lock	£153.75

## Adams Rite 1500kg Armlock 1354 Mini Electro Shearmagnet



- Suitable for Aluminium, Timber & Steel Doors
- 12/24V DC Operating Voltage
- Adjustable Re-Locking Time – 1-30 seconds
- 1500kg Shear Force
- Dimensions of Magnet: 164mm x 30mm x 25mm

Code	Description	Price ex. VAT
EL1354	1354 Mini Shearmagnet	£384.35



# DOOR HARDWARE

## MANUFACTURER BRANDS



## SYMBOLS GUIDE



BS8300 & ADM  
is the design  
of buildings &  
the approach to  
accessibility

Suitable for use  
on a fire door  
30 mins  
60 mins  
up to 120 mins  
rating

Complies with  
European health,  
safety and  
environmental  
legislation

International  
certification mark  
for fire safety

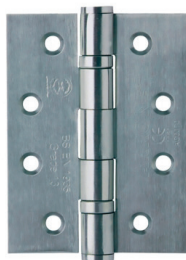
Made in  
Britain

Please visit our website for the full product range  
[www.doorcontrolsdirect.co.uk](http://www.doorcontrolsdirect.co.uk)



## DOOR HARDWARE

## Satin Stainless Steel Ball Bearing Hinges



- Twin Ball Bearing Races
- Dimensions: 102mm x 76mm x 3mm
- Square Corners
- BS EN 1935 Grade 13, Suitable for Doors up to 120kg
- CE Certified for use on FD30–FD120 Fire Doors\*
- \* When used with Intumescent

Code	Description	Price ex. VAT
HISS4B13	102mm x 76mm Hinge	£1.49
IT6HINGE	6 x Intumescent Hinge Pads	£1.98

## Arrone AR8100 Series DIN Locks &amp; Latches



- Satin Stainless Steel Forend & Strike Plate
- Lockcase Dimensions: 88mm x 165mm x 16mm
- Backset: 60mm
- Pierced for Bolt Fixing Door Furniture
- Meets Dimensional Requirements of BS8300 & ADM
- CE Certified for use on FD30–FD120 Fire Doors\*
- \* Must be used with Intumescent Jacket

Code	Description	Price ex. VAT
LK8SASH	AR8100 Sashlock	£8.10
LK8LATCH	AR8101 Upright Latch	£7.75
LK8DEAD	AR8102 Deadlock	£7.55
LK8BATH	AR8103 Bathroom Lock	£8.85
ITHDIN	Intumescent Lock Jacket to suit AR8100 series	£4.95

## Cylinders



- 5 Pin Range of Cylinders
- Supplied with 3 Keys
- Standard Security
- Fire Tested – FD30

Code	Description	Price ex. VAT
CYLSS	40mm 5 pin Euro Single Cylinder	£6.15
CYLDS	71mm 5 pin Euro Double Cylinder	£6.50
CYLTS	71mm 5 pin Euro Key & Thumbturn	£7.65

## Arrone Lever on Rose



- Suitable for Commercial and Public Applications
- Grade 304 Satin Stainless Steel
- Range Includes Escutcheons & WC Thumb-turn/Release
- Bolt Fixing Lever Furniture
- Meets Dimensional Requirements of BS8300 & ADM

Code	Description	Price ex. VAT
FNS96160SP	19mm Dia. Safety Lever on Sprung Round Rose - SSS	£7.50
TNS96169D	Bathroom Turn & Release - SSS	£7.85
ENS36167	Escutcheon - SSS	£1.95

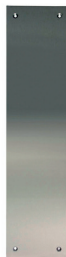
## Stainless Steel Pull Handles



- Suitable for Commercial and Public Applications
- Grade 304 Satin Stainless Steel
- 19mm Diameter
- Includes Bolt Fixings

Code	Description	Price ex. VAT
PH6S	150mm x 19mm	£5.10
PH9S	225mm x 19mm	£5.85
PH12S	300mm x 19mm	£5.90
PH17S	425mm x 19mm	£6.10

## Stainless Steel Push Plates



- Satin Stainless Steel Grade 304
- Square Corners
- Drilled and Countersunk
- Supplied with Woodscrew Fixings

Code	Description	Price ex. VAT
KP123SS	300mm x 75mm x 1.2mm	£2.80
KP143S	350mm x 75mm x 1.2mm	£2.95
KP475S	475mm x 75mm x 1.2mm	£3.45

## DOOR HARDWARE

## Flush Bolts



MORE DOOR ACCESSORIES AVAILABLE AT


**DOORCONTROLSDIRECT**  
 EXPERT KNOWLEDGE. QUALITY PRODUCTS. EXCEPTIONAL VALUE

- High Quality Stainless Steel
- Spring Loaded Lever Action
- Includes Frame Fix Plate
- Screw Fix

Code	Description	Price ex. VAT
BTF8SSS	200mm x 20mm Lever Action Flush Bolt - SSS	£6.50
ACCECS	Easy Clean Floor Socket	£2.20

## Stainless Steel Door Stops



Floor Mounted



Projection



Oval Shielded

MORE DOOR ACCESSORIES AVAILABLE AT


**DOORCONTROLSDIRECT**  
 EXPERT KNOWLEDGE. QUALITY PRODUCTS. EXCEPTIONAL VALUE

- Satin Stainless Steel
- Screw Fix
- Provides Additional Protection for Doors

Code	Description	Price ex. VAT
DPRSSS	Floor Mounted Door Stop	£2.50
DPPSSS	Projection Door Stop	£2.50
DPOSSS	Oval Shielded Door Stop	£1.95

## Fire Door Signage


 Fire Door  
 Keep  
 Locked

 Automatic  
 fire door  
 keep clear

 Fire Door  
 Keep  
 Shut

MORE SIGNS AVAILABLE AT


**DOORCONTROLSDIRECT**  
 EXPERT KNOWLEDGE. QUALITY PRODUCTS. EXCEPTIONAL VALUE

- Durable Commercial Signage
- Satin Stainless Steel
- 75mm Diameter
- Screw Fix

Code	Description	Price ex. VAT
SNGFDKL75S	Fire Door Keep Locked Sign	£1.65
SNGFDKS75S	Fire Door Keep Shut Sign	£1.65
SNGAFDKC75S	Automatic Fire Door Sign	£1.65



## DIGITAL LOCKS

## Arrone AR195 Digital Lock



- Light Duty Mechanical Digital Lock
- Suitable for Internal Installation Only
- Non-handed Unit
- Includes Hold-Back Facility
- Suitable for 33-55mm thick doors
- Deadlocking tubular latch with 60mm Backset

Code	Description	Price ex. VAT
DLH195	AR195 Digital Lock - Silver	£19.85

## Codelocks CL410 &amp; CL415 Digital Locks



- Medium Duty Mechanical Digital Lock
- Suitable for Internal and External Installation
- Non-handed Unit
- Hold-Back Model Available (CL415)
- Suitable for 35-60mm thick doors
- Deadlocking Tubular Latch with 60mm Backset
- Intumescent available for use on FD30-FD60 Fire Doors

Code	Description	Price ex. VAT
CL410	Digital Lock - SSS	£79.20
CL415	Lock with Passage Function - SSS	£79.20
DLCFIRE	Codelocks Intumescent Pack	£10.80

## Codelocks CL510 &amp; CL515 Digital Locks



- Heavy Duty Mechanical Digital Lock
- Suitable for Internal and External Installation
- Non-handed Unit
- Hold-Back Model Available (CL515)
- Suitable for 35-60mm thick doors
- Deadlocking Tubular Latch with 60mm Backset
- Intumescent available for use on FD30-FD60 Fire Doors

Code	Description	Price ex. VAT
CL510	Digital Lock - SSS	£103.70
CL515	Lock with Passage Function - SSS	£103.70
DLCFIRE	Codelocks Intumescent Pack	£10.80

## DIGITAL LOCKS

KABA Simplex 7104  
Digital Lock

DLK FIRE  
KABA INTUMESCENT FIRE KIT  
£14.55 ex. VAT



- Light Duty Mechanical Digital Lock
- Suitable for Internal and External Installation
- Non-Handed Unit
- Easy Code Change – Removal from Door not Required
- Deadlocking Adjustable Latch 60mm-70mm Backset
- Suitable for 35-57mm thick doors
- Intumescent Fire Kit for use on FD30 Doors

Code	Description	Price ex. VAT
DLK7104	Digital Lock - Satin Chrome	£78.45

KABA Simplex Knob 1011 & 1021  
Digital Locks

DLK FIRE  
KABA INTUMESCENT FIRE KIT  
£14.55 ex. VAT



- Heavy Duty Mechanical Digital Lock
- Suitable for Internal and External Installation
- Easy Code Change – Removal from Door not Required
- Non-Handed Unit
- Passage Function Model Available (DLK1031)
- Intumescent available for use on FD30-FD60 Fire Doors

Code	Description	Price ex. VAT
DLK1011	Standard Digital Lock with Knob	£280.65
DLK1031	Lock with Passage Function & Knob	£309.00

KABA Simplex Lever 1011 & 1031  
Digital Locks

DLK FIRE  
KABA INTUMESCENT FIRE KIT  
£14.55 ex. VAT



- Heavy Duty Mechanical Digital Lock
- Suitable for Internal and External Installation
- Easy Code Change – Removal from Door not Required
- DIN Handed - see Website for Handling Guide
- Passage Function Model available (DLKL1031)
- Intumescent available for use on FD30-FD60 Fire Doors

Code	Description	Price ex. VAT
DLKL1011SCL	LH Digital Lock with Lever Handle	£331.65
DLKL1011SCR	RH Digital Lock with Lever Handle	£331.65
DLKL1031SCL	LH Lock with Passage Function	£364.25
DLKL1031SCR	RH Lock with Passage Function	£364.25



## PANIC HARDWARE

### Briton Panic Latch

Briton



- Suitable for Single Doors up to 2500mm high x 1300mm wide
- Horizontal Push Bar with 1 Point Latch
- Reversible Handing
- Tested to BS EN 1125
- CE Marked

Code	Description	Price ex. VAT
PCB378E	Reversible Rim Panic Latch Silver	£37.50

### Briton Panic Bolts

Briton



- Suitable for Door Leaves up to 2500mm high x 1300mm wide
- Horizontal Push Bar with 2 Point Locking
- Reversible Handing
- Tested to BS EN 1125
- CE Marked

Code	Description	Price ex. VAT
PCB376E	Single Vertical Panic Bolt Silver	£48.50
PCB377E	Double Rebated Panic Bolt Set Silver	£83.50

### Briton Push Pads

Briton



- Suitable for Doors up to 1300mm wide
- Reversible Handing
- 1438 – Push Pad with Single Latch
- 372 – Push Pad with 2 Point Locking Bolt
- Tested to BS EN 179
- CE Marked

Code	Description	Price ex. VAT
PCB1438	Reversible Push Pad Rim Latch Silver	£38.90
PCB372E	Push Pad Vertical Bolt Silver	£44.50

## PANIC HARDWARE

### Briton Panic Nightlatches

Briton



- Suitable for Single Doors up to 1300mm wide
- Reversible Handing
- Horizontal Push Bar or Push Pad with Single Latch
- Tested to BS EN 1125
- CE Marked
- Use with Euro or Oval Profile Cylinder (Sold Separately)

Code	Description	Price ex. VAT
PCB379N	Mortice Panic Nightlatch - Silver	£69.80
PCB389E	Push Pad Mortice Nightlatch - Silver	£61.30

### Briton Outside Access Devices

Briton



- Designed for use with the 376 Briton Range of Panic Hardware
- Reversible Handing
- Supplied with 40mm Euro Profile Cylinder
- Supplied with Fixings to Suit Timber & Metal Doors
- Suitable for 40-70mm thick Doors

Code	Description	Price ex. VAT
PCB1413ELE	Lever Operated OAD - Silver	£53.20
PCB1413U	Knob Operated OAD - Silver	£53.20

### Briton 9260 Digital Lock

Briton



- Mechanical Digital Lock – Panic Hardware Model
- Anti-vandal Clutch Protection Handle
- Compatible with the Briton 72, 376, 377, 378, 560, 570, 1438 Series
- Reversible Handing
- Over 2000 Non-Sequential Code Options
- Supplied with Fixings to Suit Timber & Metal Doors
- Suitable for 35-60mm thick Doors

Code	Description	Price ex. VAT
PCB9260SS	Digital Lock Outside Access Device	£105.50

## INTUMESCENT

### Intumescent Letterboxes



- Adjustable Telescopic Sleeve to suit 40-80mm thick doors
- Fitted with Brush Pile Draught Excluders
- 30 Minute Fire Rating
- Dimensions Overall: 272mm x 70mm
- Dimensions Aperture: 221mm x 375mm

Code	Description	Price ex. VAT
ITLPSAA	Satin Anodised Aluminium	£14.95
ITLPSSS	Satin Stainless Steel	£19.80

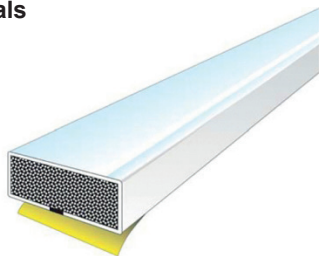
### Intumescent Grilles



- Zintec Mild Steel Construction
- Up to 60 Minute Fire Rating
- Faceplate's Available to Suit Vents
- Silver Powder Coated
- \* When used with Intumescent Sealant

Code	Description	Price ex. VAT
ITV96	225mm x 112mm Air Transfer Grille	£9.95
ITV1212	300mm x 300mm Air Transfer Grille	£29.60
VL2514A	250mm x 140mm Louvre Vent	£4.90
	Faceplate - Silver	
VL3434A	340mm x 340mm Louvre Vent	£9.80
	Faceplate - Silver	

### Pack of 50 Intumescent Seals



- 30 Minute Fire Rating
- High Performance Graphite Core
- Available White or Brown
- Available 10mm, 15mm or 20mm width x 1050mm
- Available Plain Fire or Fire and Smoke Seal (with Brush)

Code	Description	Price ex. VAT
ITPW1	10mm x 4mm Plain - White	£22.50
IT15PW1	15mm x 4mm Plain - White	£27.00
IT20PW1	20mm x 4mm Plain - White	£35.00
ITSW1	10mm x 4mm Fire & Smoke - White	£26.00
IT15SW1	15mm x 4mm Fire & Smoke - White	£33.00
IT20SW1	20mm x 4mm Fire & Smoke - White	£40.00

MORE OPTIONS AVAILABLE AT



**DOORCONTROLSDIRECT**

EXPERT HARDWARE. QUALITY PRODUCTS. EXCEPTIONAL VALUE.



# OPEN Your Trade Account Today

**30**  
days

Apply for a  
30 day Trade  
Account

**0%**

30 days  
Interest Free  
Credit Available



Fast  
Application  
Process



Competitive  
Trade Prices



Monthly  
Statements

## UK MAINLAND DELIVERY PRICES



ORDER VALUE  
UNDER £150  
(+VAT)

ORDER VALUE  
OVER £150  
(+VAT)

FAST	NEXT WORKING DAY	£6.95	FREE
FASTER	BEFORE NOON	£15.00	£15.00
FASTEST	BEFORE 10:30AM	£30.00	£30.00
WEEKEND	SATURDAY DELIVERY	£40.00	£40.00

## HOW TO ORDER



WEB

[www.doorcontrolsdirect.co.uk](http://www.doorcontrolsdirect.co.uk)



EMAIL

[sales@doorcontrolsdirect.co.uk](mailto:sales@doorcontrolsdirect.co.uk)



PHONE

01305 257996

# ALL IN ONE ACCESS CONTROL KITS



to view the NEW range visit:  
[www.doorcontrolsdirect.co.uk](http://www.doorcontrolsdirect.co.uk)

WIDE RANGE OF  
ACCESS CONTROL KITS  
AVAILABLE


FROM £55.00  
EX. VAT



**DOORCONTROLSDIRECT**  
EXPERT KNOWLEDGE, QUALITY PRODUCTS, EXCEPTIONAL VALUE

 [www.doorcontrolsdirect.co.uk](http://www.doorcontrolsdirect.co.uk)

 [sales@doorcontrolsdirect.co.uk](mailto:sales@doorcontrolsdirect.co.uk)

 01305 257996





# DOORCONTROLSDIRECT

EXPERT KNOWLEDGE, QUALITY PRODUCTS, EXCEPTIONAL VALUE



[www.doorcontrolsdirect.co.uk](http://www.doorcontrolsdirect.co.uk)



[sales@doorcontrolsdirect.co.uk](mailto:sales@doorcontrolsdirect.co.uk)



01305 257996



Unit 3, Grove Trading Estate  
Dorchester  
Dorset  
DT1 1ST

Please visit our website for the full product range  
[www.doorcontrolsdirect.co.uk](http://www.doorcontrolsdirect.co.uk)